

Ivy Gardens 2
BY SAMANA DEVELOPERS

A SYMPHONY OF LUXURY

SAMANA
DEVELOPERS



URBAN HAVEN

Welcome home to Ivy Gardens 2 by SAMANA Developers – a luxurious haven. Walk into the world of opulence, reflected perfectly in every detail of this exquisite project. This is where you experience the perfect amalgamation of modern comfort and natural serenity. Discover your new sanctuary in the heart of Dubai.

ELEGANCE REDEFINED

Behold, the epitome of modern living - Ivy Gardens 2 by SAMANA Developers. A masterpiece of architecture, this stunning project redefines luxury living in the heart of Dubai. Reflecting craftsmanship, each space here is created to be as functional as it is beautiful. Come discover the magic unfold!

SAMANA

A woman with long, wavy blonde hair is shown from the back, wearing a strapless, floor-length green gown with a beaded bodice. The dress is billowing in the wind, creating large, graceful folds. She is standing in a field of tall, golden-brown grasses. The background is a soft, hazy landscape under a warm, golden light, suggesting a sunset or sunrise. The overall mood is serene and elegant.

VISION MEETS REALITY

Like a symphony, this architectural marvel orchestrates a harmonious blend of nature and luxury, offering you a serene retreat from the bustling city life. Experience the allure of sumptuousness and discover a new way of living, where comfort and style intertwine to create an exceptional living experience.



SIAMANA





A TAPESTRY OF OPULENCE

Emerge into a realm of exquisite grandeur at Iuy Gardens 2 by SAMANA Developers, where every facet of existence is concealed in lavish sophistication. This architectural marvel is a paean to luxury, meticulously crafted to cater to the most discerning tastes.



EASY ACCESS, GREAT CONVENIENCE

Situated at DLRC, IVY Gardens 2 by SAMANA Developers offers the perfect location and has everything needed for everyday life nearby, along with easy access to major locations. It is strategically located between the Emirates and Al Ain highways.

10 – 15 min

Global Village
Dubai Outlet Mall
MG World
Fairgreen International School

15 – 20 min

Mirdif City Centre
Dubai Airport
Dubai Mall
Miracle Garden

15 – 20 min

Dubai Downtown
Burj Al Khalifa

SEAMLESS ACCESSIBILITY

With easy access to major highways and public transportation, DLRC offers residents seamless connectivity to the rest of the city. Whether you're commuting to work or exploring the city's many attractions, living in DLRC puts everything within easy reach.





SAMANA

A woman with long, wavy hair is seen from behind, looking out at a city skyline at night. The background is filled with bokeh lights in shades of blue, orange, and red, creating a dreamy atmosphere. The woman is wearing a dark, long-sleeved top.

REFLECTING OPIULENCE

A symphony of contemporary design and timeless elegance, standing as a beacon of prestige in the bustling heart of Dubai. Each detail, a stroke of genius, weaving together to create a masterpiece simply awe-inspiring. It's time to luxuriate in the splendour!



LIVE THE SERENE MOMENTS

Immerse yourself in a world of romance and equanimity at Ivy Gardens 2 by SAMANA Developers. Here, amidst stunning views and gentle breezes, you'll find the perfect setting for moments of togetherness and intimacy. Our balconies are more than just outdoor spaces; they're extensions of your living space, offering you a private retreat where you can relax, unwind, and reconnect with your loved one.







VIBE
DRUM & BASS
DJ MARKY, ELEITO MELHOR DJ INTERNACIONAL
EM 2023 - STRAIGHT RIPPERS
Extra a
EXTRA

DIVE INTO INDULGENCE

Indulge in the ultimate relaxation experience at Ivy Gardens 2 by SAMANA Developers, where luxury meets tranquility. Whether you're lounging by the poolside, sipping on a refreshing drink, or taking a leisurely swim, every moment here is a testament to the art of living well. Come explore a lifestyle that is as indulgent as it is rejuvenating.



SAMANA



BLENDING TECHNOLOGY WITH LUXURY

Live a life that is as smart as it is sophisticated with our smart homes. Experience the convenience of controlling your home with just a touch or a voice command. From adjusting the lighting to setting the perfect temperature, our smart homes put you in control, allowing you to create the perfect ambience for every moment.







COMFORT OASIS

Experience the joy of family-centric living at Ivy Gardens 2 by SAMANA Developers, where every moment is an opportunity to create cherished memories. Here, you'll find a home that is not just luxurious but also warm, welcoming, and filled with love. Our spacious and elegantly designed living rooms are crafted with your family's comfort and happiness in mind.









TIMELESS MOMENTS

Create unforgettable memories with your loved ones in the serene ambience of Iuy Gardens 2 by SAMANA Developers. Immerse yourself in the crystal-clear waters of our luxurious pool, surrounded by lush greenery and exquisite architecture. Experience pure joy and relaxation as you bond with family and friends in this idyllic setting, making every moment truly special.

BOWLING





BALL SPEED: 93 mph

CARRY: 85 yds

130 yds
Fairway

A man and a woman are jogging away from the camera on a paved path in a lush garden. The scene is bathed in the warm, golden light of sunrise or sunset, with long shadows cast on the path. The garden is filled with various plants, including large palm trees and flowering shrubs. The overall atmosphere is peaceful and healthy.

REVEL IN THE JOYS OF LIFE

Your journey to wellness and indulgence commences at Ivy Gardens 2 by SAMANA Developers. Every moment is an ode to the art of living. Dive into a lifestyle that transcends the ordinary, offering you a sanctuary of serenity amidst the bustling city life. Savour the beauty of each day!







A SEAMLESS EXPERIENCE

Experience the epitome of convenience with our valet parking service at Ivy Gardens 2 by SAMANA Developers. Our valet parking service is more than just a convenience; it's a luxury experience that adds an extra touch of elegance to your lifestyle. Whether you're arriving home after a long day or heading out for a night on the town, our valet service makes parking effortless and stress-free.

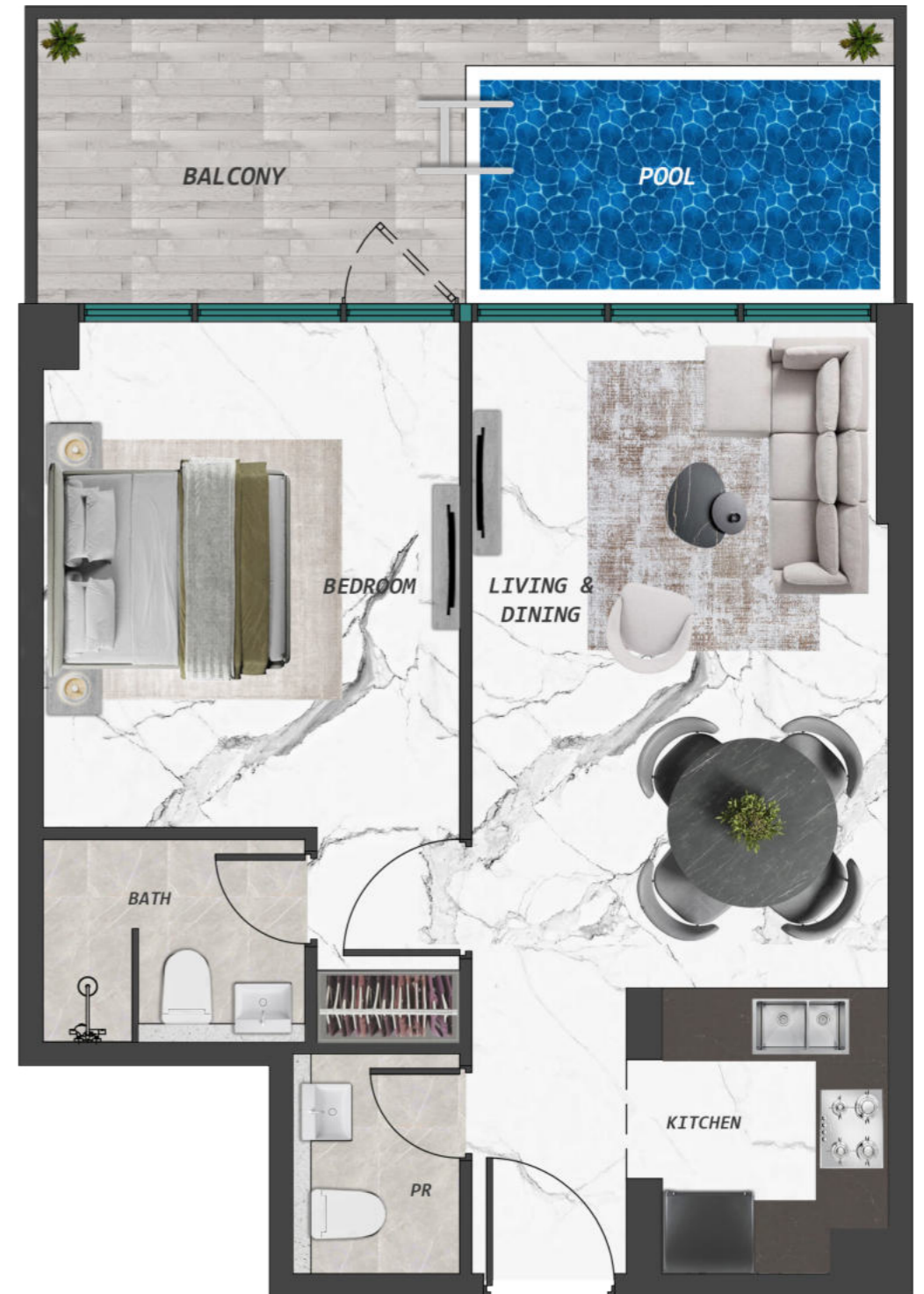
An architectural rendering of a modern, multi-story building with a curved facade. The building features large glass windows and balconies with glass railings. Several palm trees are planted in front of the building, and a person is visible sitting on a bench on a lower level. The scene is set against a clear sky, and the overall image has a dark green overlay.

UNITS LAYOUT

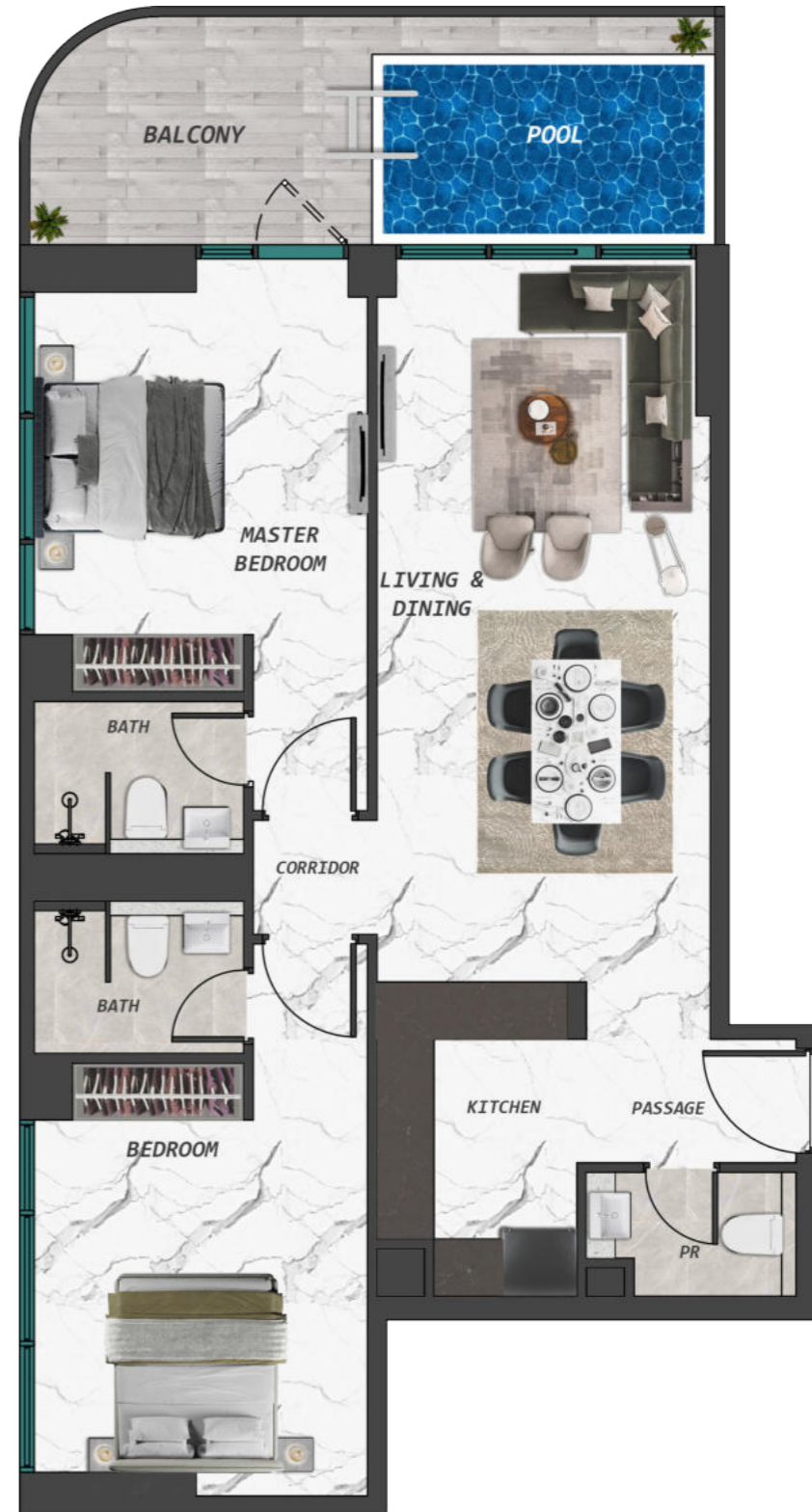
STUDIO WITH POOL



1 BEDROOM WITH POOL



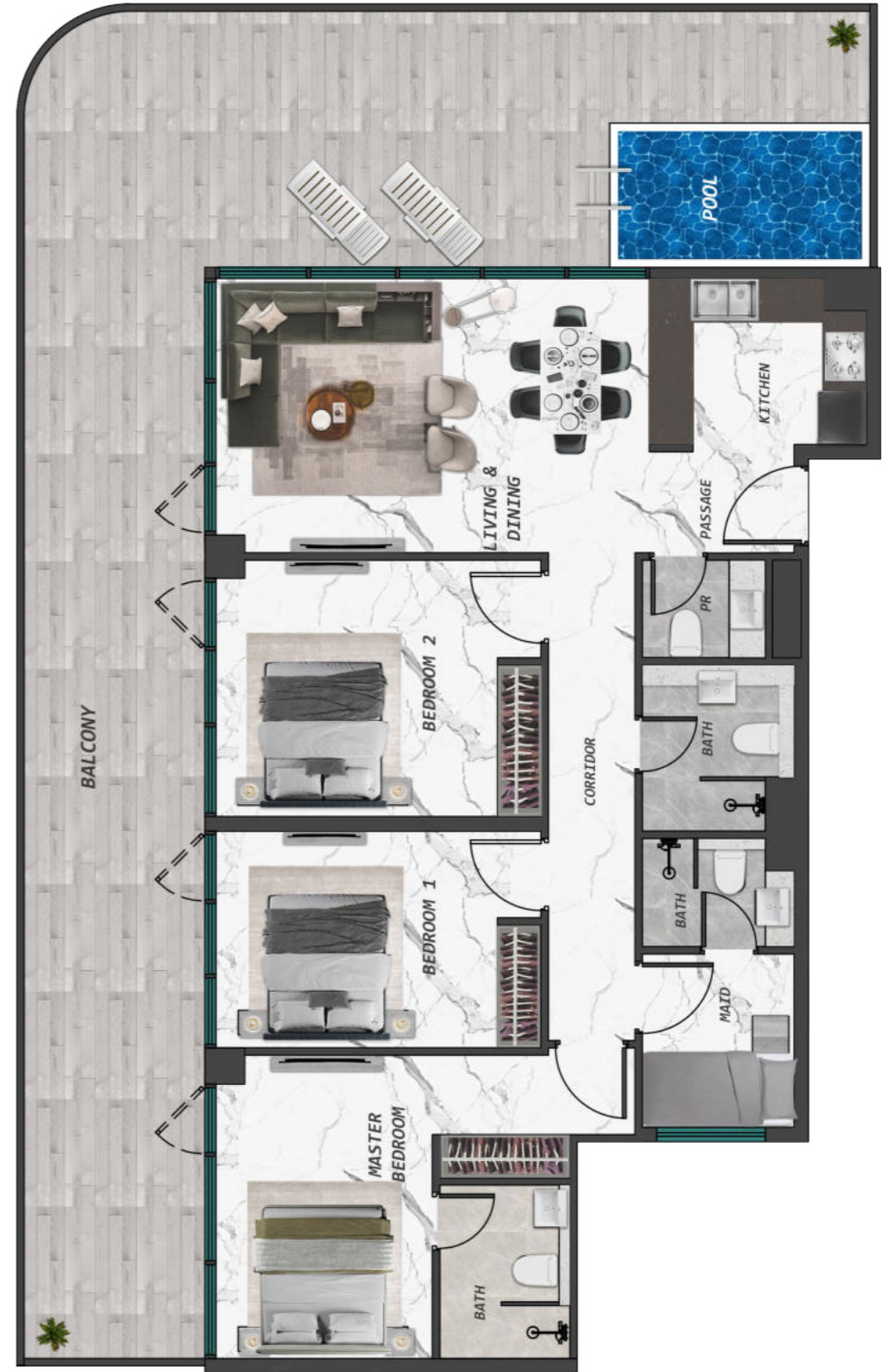
2 BEDROOM WITH POOL



2 BEDROOM
WITH POOL
+
MAID ROOM



3 BEDROOM WITH POOL + MAID ROOM



A modern, minimalist interior space featuring a light-colored sofa with dark cushions, a dining table with chairs, and a large abstract artwork on the wall. The room is brightly lit with recessed ceiling lights and large windows on the right side. The overall aesthetic is clean and contemporary.

SAMANA

DEVELOPERS

+971 4 563 9510
info@samanadevelopers.com
www.samanadevelopers.com

4th Floor, Building 7,
Bay Square, Business Bay,
Dubai, United Arab Emirates